



Platanus™

**scivax** » <https://www.scivax.com>

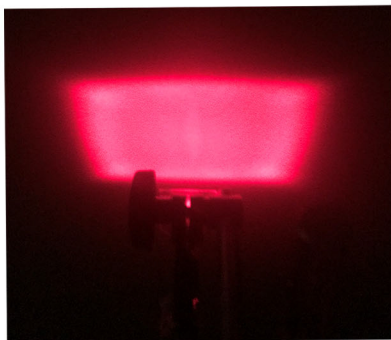
# Platanus Diffuser Data Sheet

## 110°x85°

### Diffuser Characteristics

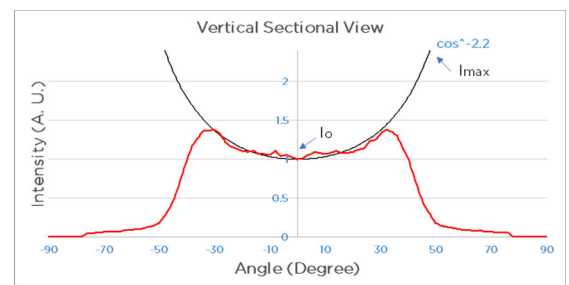
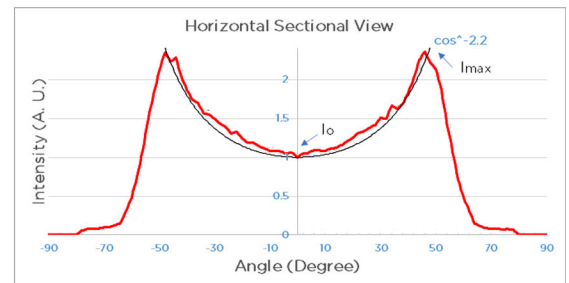
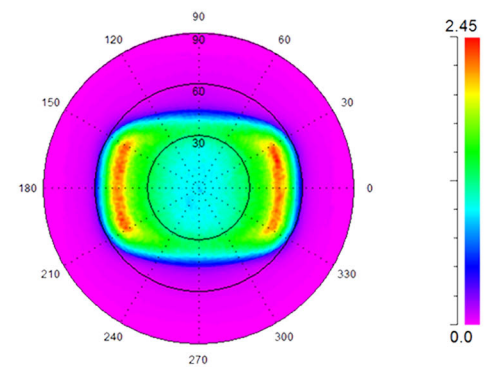
Scatter Properties	
FOI	110°x85°(FWHM of $I_{max}$ ) 120°x 90°(FW of $I_0/2$ )
Shape	Rectangle
Physical Properties	
Material	Resin on glass
Lens size	e.g. 2.7mm*3mm (negotiable)
Glass thickness	e.g. 0.4mm (negotiable)
Resin thickness	Below 0.05 mmt
Coating	Without AR coating

### Projection image with a laser beam



### Measured Intensity

Polar Projection of Far-Field Intensity



Sample range(FOI)

60\*45/72\*55/90\*70/47\*41/110\*85/  
79\*79/140\*95/130\*90/125\*30/120\*90/



Platanus™

**scivax** » <https://www.scivax.com>

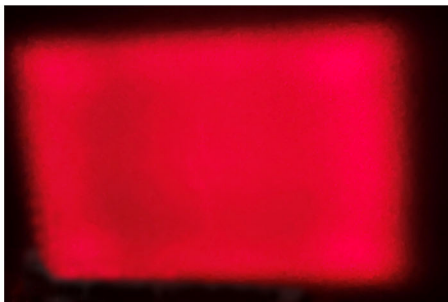
# Platanus Diffuser Data Sheet

## 90°x70°

### Diffuser Characteristics

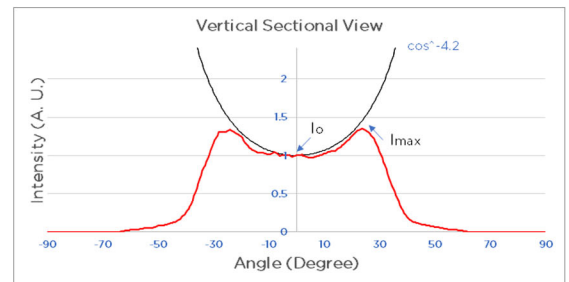
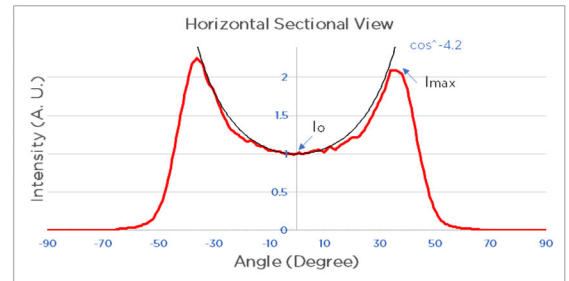
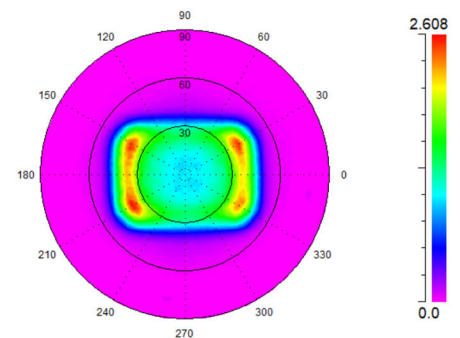
Scatter Properties	
FOI	90°x70°(FWHM of I <sub>max</sub> ) 95°x72°(FW of I <sub>0</sub> /2)
Shape	Rectangle
Physical Properties	
Material	Resin on glass
Lens size	e.g. 2.7mm*3mm (negotiable)
Glass thickness	e.g. 0.4mm (negotiable)
Resin thickness	Below 0.05 mmt
Coating	Without AR coating

### Projection image with a laser beam



### Measured Intensity

Polar Projection of Far-Field Intensity



**Sample range(FOI)**

60\*45/72\*55/90\*70/47\*41/110\*85/  
79\*79/140\*95/130\*90/125\*30/120\*90/



Platanus™

**scivax** » <https://www.scivax.com>

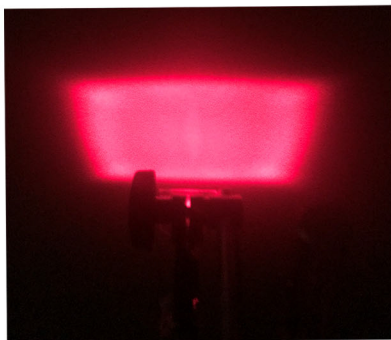
# Platanus Diffuser Data Sheet

## 79°x79°

### Diffuser Characteristics

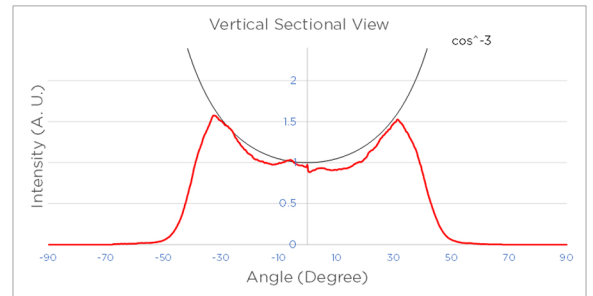
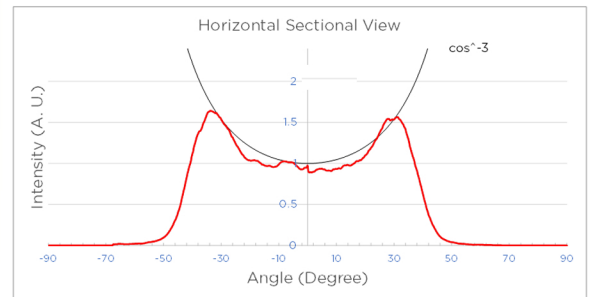
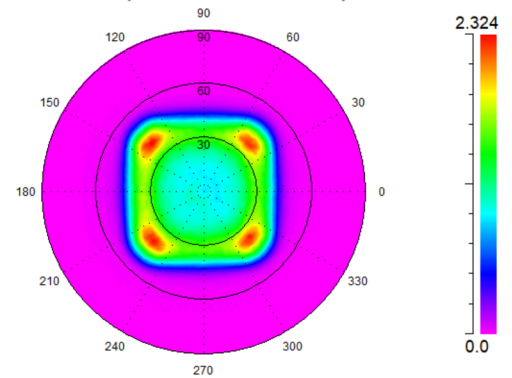
Scatter Properties	
FOI	79°x79°(FWHM of I <sub>max</sub> )
Shape	Rectangle
Physical Properties	
Material	Resin on glass
Lens size	e.g. 2.7mm*3mm (negotiable)
Glass thickness	e.g. 0.4mm (negotiable)
Resin thickness	Below 0.05 mmt
Coating	Without AR coating

### Projection image with a laser beam



### Measured Intensity

Polar Projection of Far-Field Intensity



**Sample range(FOI)**

60°45/72°55/90°70/47°41/110°85/  
79°79/140°95/130°90/125°30/120°90/





Platanus™

**scivax** » <https://www.scivax.com>

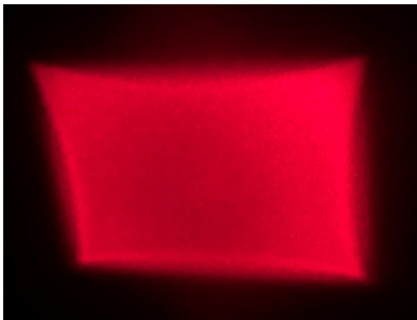
# Platanus Diffuser Data Sheet

## 72°x55°

### Diffuser Characteristics

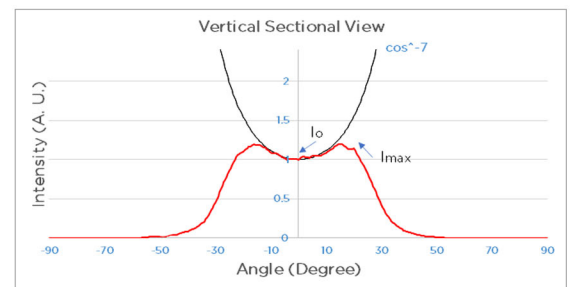
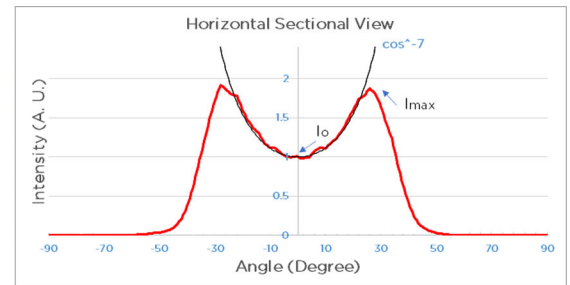
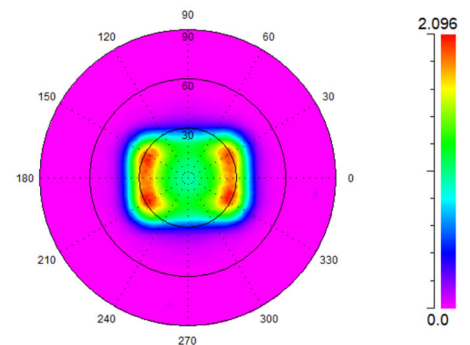
Scatter Properties	
FOI	72°x55°(FWHM of $I_{max}$ ) 76°x58°(FW of $I_0/2$ )
Shape	Rectangle
Physical Properties	
Material	Resin on glass
Lens size	e.g. 2.7mm*3mm (negotiable)
Glass thickness	e.g. 0.4mm (negotiable)
Resin thickness	Below 0.05 mmt
Coating	Without AR coating

### Projection image with a laser beam



### Measured Intensity

Polar Projection of Far-Field Intensity



Sample range(FOI)

60\*45/72\*55/90\*70/47\*41/110\*85/  
79\*79/140\*95/130\*90/125\*30/120\*90/





Platanus™

**scivax** » <https://www.scivax.com>

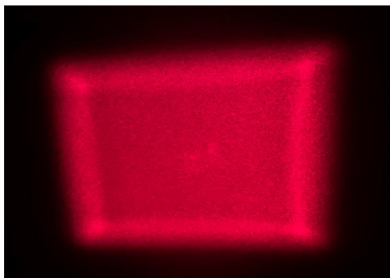
# Platanus Diffuser Data Sheet

## 60°x45°

### Diffuser Characteristics

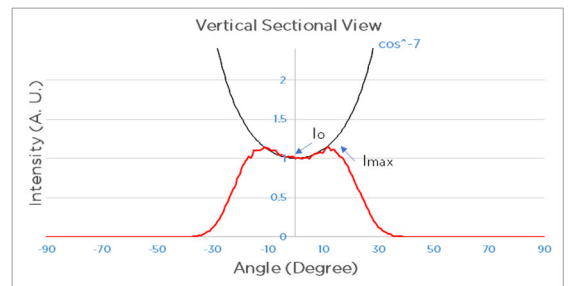
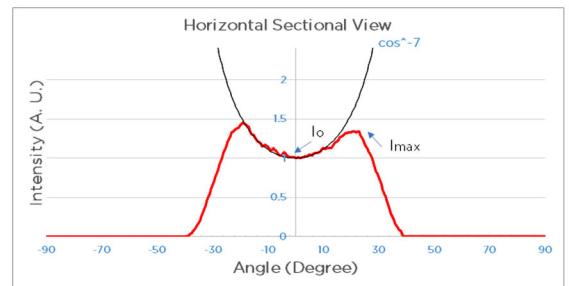
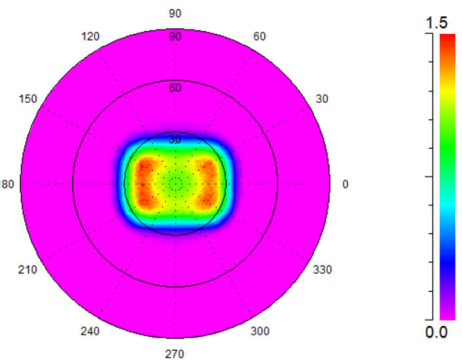
Scatter Properties	
FOI	60°x45°(FWHM of I <sub>max</sub> ) 64°x48°(FW of I <sub>0</sub> /2)
Shape	Rectangle
Physical Properties	
Material	Resin on glass
Lens size	e.g. 2.7mm*3mm (negotiable)
Glass thickness	e.g. 0.4mm (negotiable)
Resin thickness	Below 0.05 mmt
Coating	Without AR coating

### Projection image with a laser beam



### Measured Intensity

Polar Projection of Far-Field Intensity



Sample range(FOI)

60\*45/72\*55/90\*70/47\*41/110\*85/  
79\*79/140\*95/130\*90/125\*30/120\*90/



Platanus™

**scivax** »» <https://www.scivax.com>

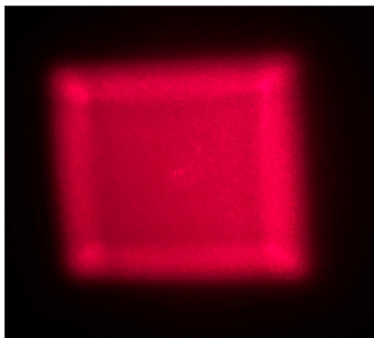
# Platanus Diffuser Data Sheet

## 47°x41°

### Diffuser Characteristics

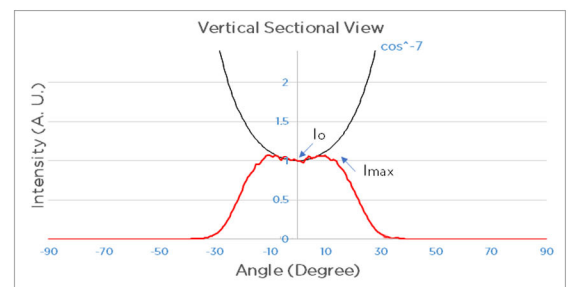
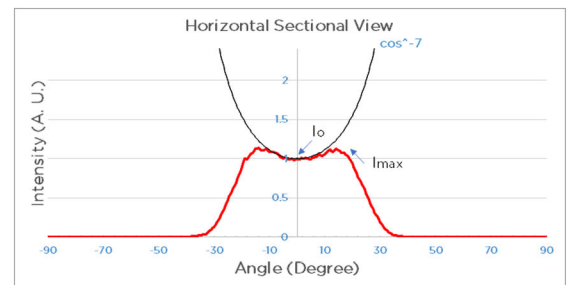
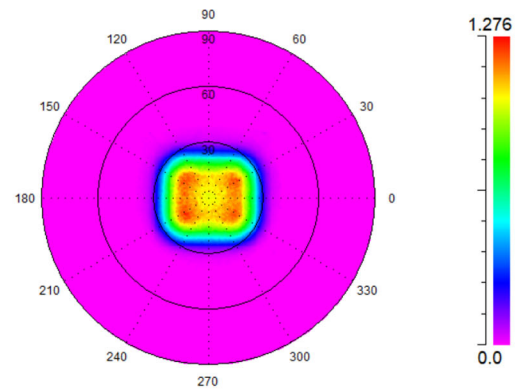
Scatter Properties	
FOI	47°x41°(FWHM of I <sub>max</sub> ) 51°x44°(FW of I <sub>0</sub> /2)
Shape	Rectangle
Physical Properties	
Material	Resin on glass
Lens size	e.g. 2.7mm*3mm (negotiable)
Glass thickness	e.g. 0.4mm (negotiable)
Resin thickness	Below 0.05 mmt
Coating	Without AR coating

### Projection image with a laser beam



### Measured Intensity

Polar Projection of Far-Field Intensity



**Sample range(FOI)**

60\*45/72\*55/90\*70/47\*41/110\*85/  
79\*79/140\*95/130\*90/125\*30/120\*90/



Platanus™

**scivax** » <https://www.scivax.com>

# Platanus Diffuser Data Sheet

## 125°×30°

### Diffuser Characteristics

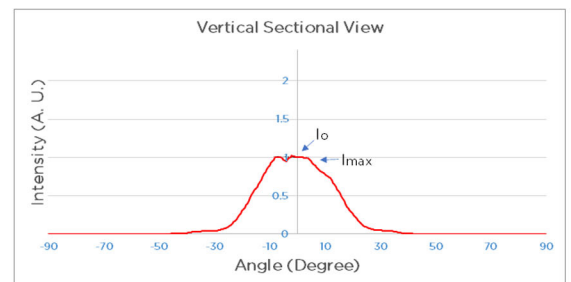
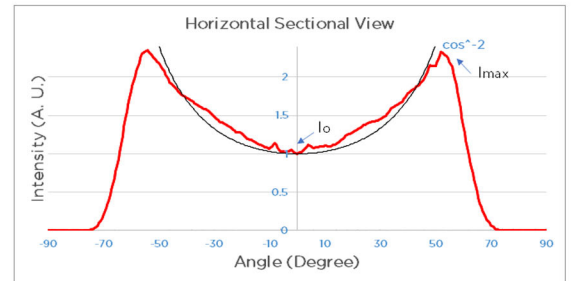
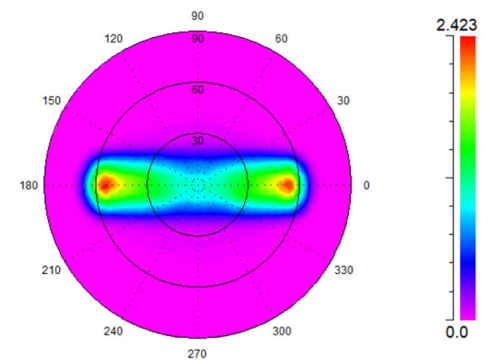
Scatter Properties	
FOI	125°×30°(FWHM of $I_{max}$ ) 130°×30°(FW of $I_0/2$ )
Shape	Rectangle
Physical Properties	
Material	Resin on glass
Lens size	e.g. 2.7mm×3mm (negotiable)
Glass thickness	e.g. 0.4mm (negotiable)
Resin thickness	Below 0.05 mmt
Coating	Without AR coating

### Projection image with a laser beam



### Measured Intensity

Polar Projection of Far-Field Intensity



Sample range(FOI)

60°45/72°55/90°70/47°41/110°85/  
79°79/140°95/130°90/125°30/120°90/





Platanus™

**scivax** » <https://www.scivax.com>

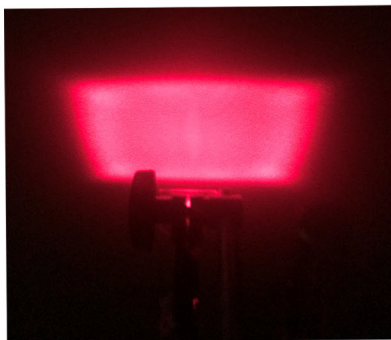
# Platanus Diffuser Data Sheet

## 130°x90°

### Diffuser Characteristics

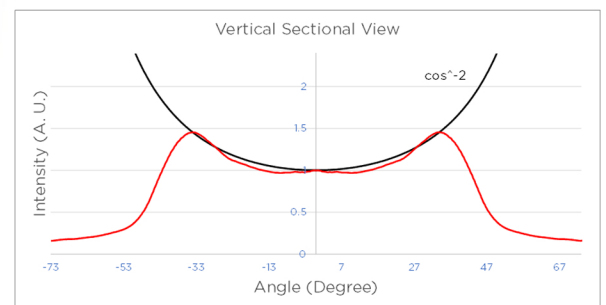
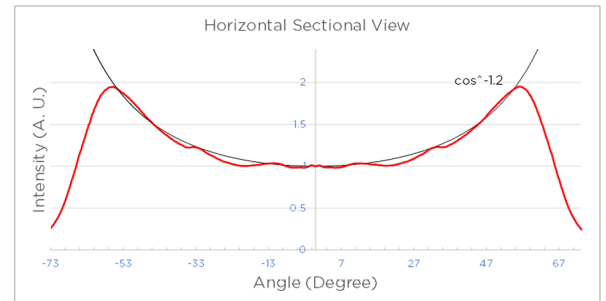
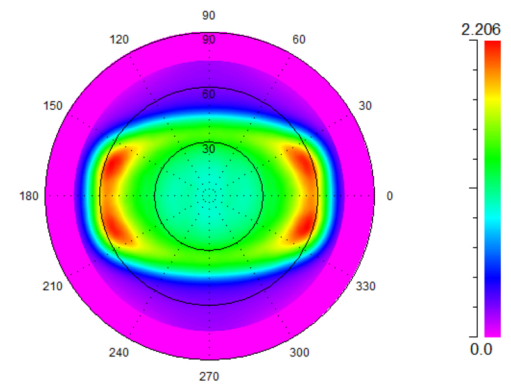
Scatter Properties	
FOI	130°x90°(FWHM of I <sub>max</sub> )
Shape	Rectangle
Physical Properties	
Material	Resin on glass
Lens size	e.g. 2.7mm*3mm (negotiable)
Glass thickness	e.g. 0.4mm (negotiable)
Resin thickness	Below 0.05 mmt
Coating	Without AR coating

### Projection image with a laser beam



### Measured Intensity

Polar Projection of Far-Field Intensity



**Sample range(FOI)**

60\*45/72\*55/90\*70/47\*41/110\*85/  
79\*79/140\*95/130\*90/125\*30/120\*90/



Platanus™

**scivax** » <https://www.scivax.com>

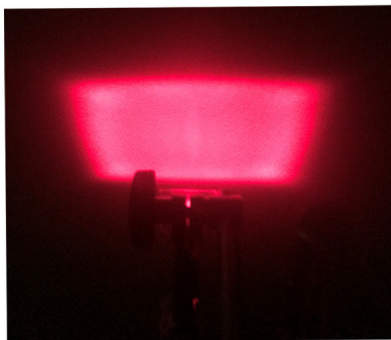
# Platanus Diffuser Data Sheet

## 140°x95°

### Diffuser Characteristics

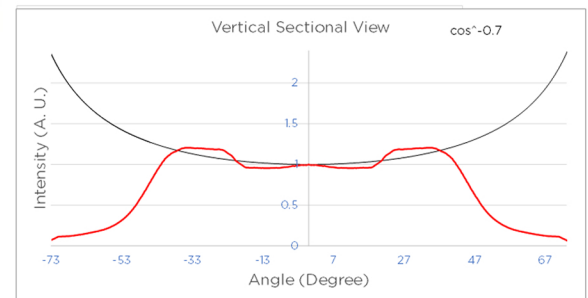
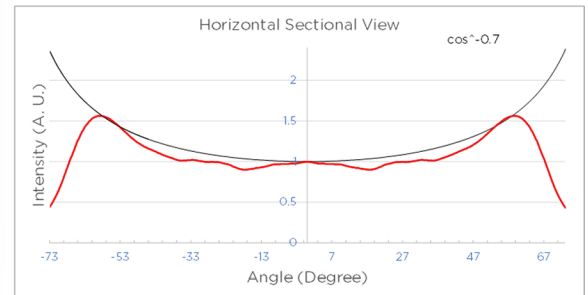
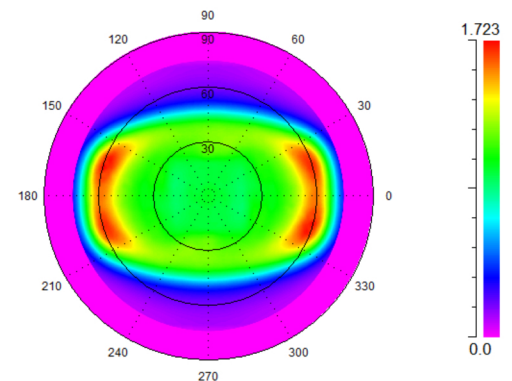
Scatter Properties	
FOI	140°x95°(FWHM of I <sub>max</sub> )
Shape	Rectangle
Physical Properties	
Material	Resin on glass
Lens size	e.g. 2.7mm*3mm (negotiable)
Glass thickness	e.g. 0.4mm (negotiable)
Resin thickness	Below 0.05 mmt
Coating	Without AR coating

### Projection image with a laser beam



### Measured Intensity

Polar Projection of Far-Field Intensity



**Sample range(FOI)**

60°45/72°55/90°70/47°41/110°85/  
79°79/140°95/130°90/125°30/120°90/



Platanus™

scivax »» <https://www.scivax.com>

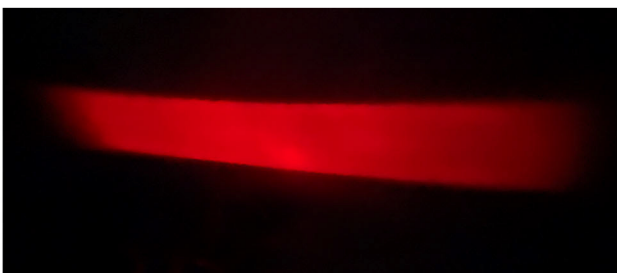
# Platanus Diffuser Data Sheet

## 76°×36°

### Diffuser Characteristics

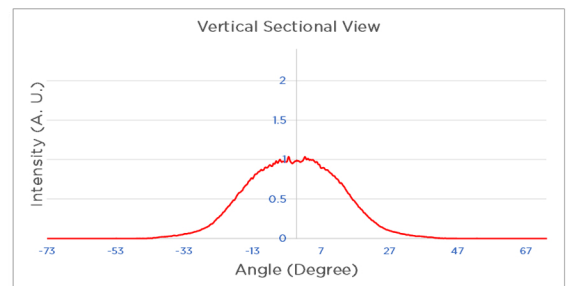
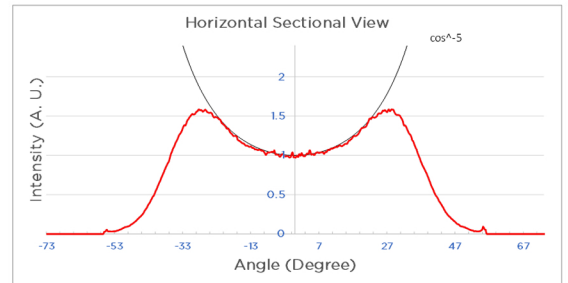
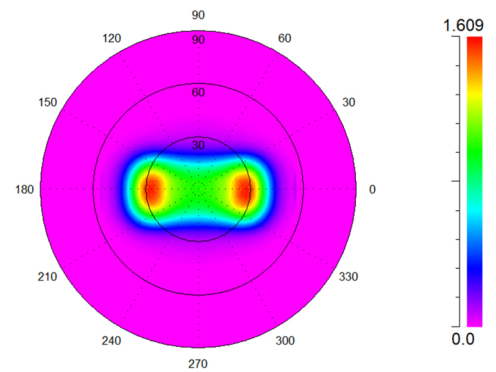
Scatter Properties	
FOI	76°×36° (FWHM of I <sub>max</sub> ) 82°×36° (FW of I <sub>0</sub> /2)
Shape	Rectangle
Physical Properties	
Material	Resin on glass
Lens size	e.g. 2.7mm×3mm (negotiable)
Glass thickness	e.g. 0.4mm (negotiable)
Resin thickness	Below 0.05 mmt
Coating	Without AR coating

### Projection image with a laser beam



### Measured Intensity

Polar Projection of Far-Field Intensity



Sample range(FOI)

60\*45/72\*55/90\*70/47\*41/110\*85/  
79\*79/140\*95/130\*90/125\*30/120\*90/